

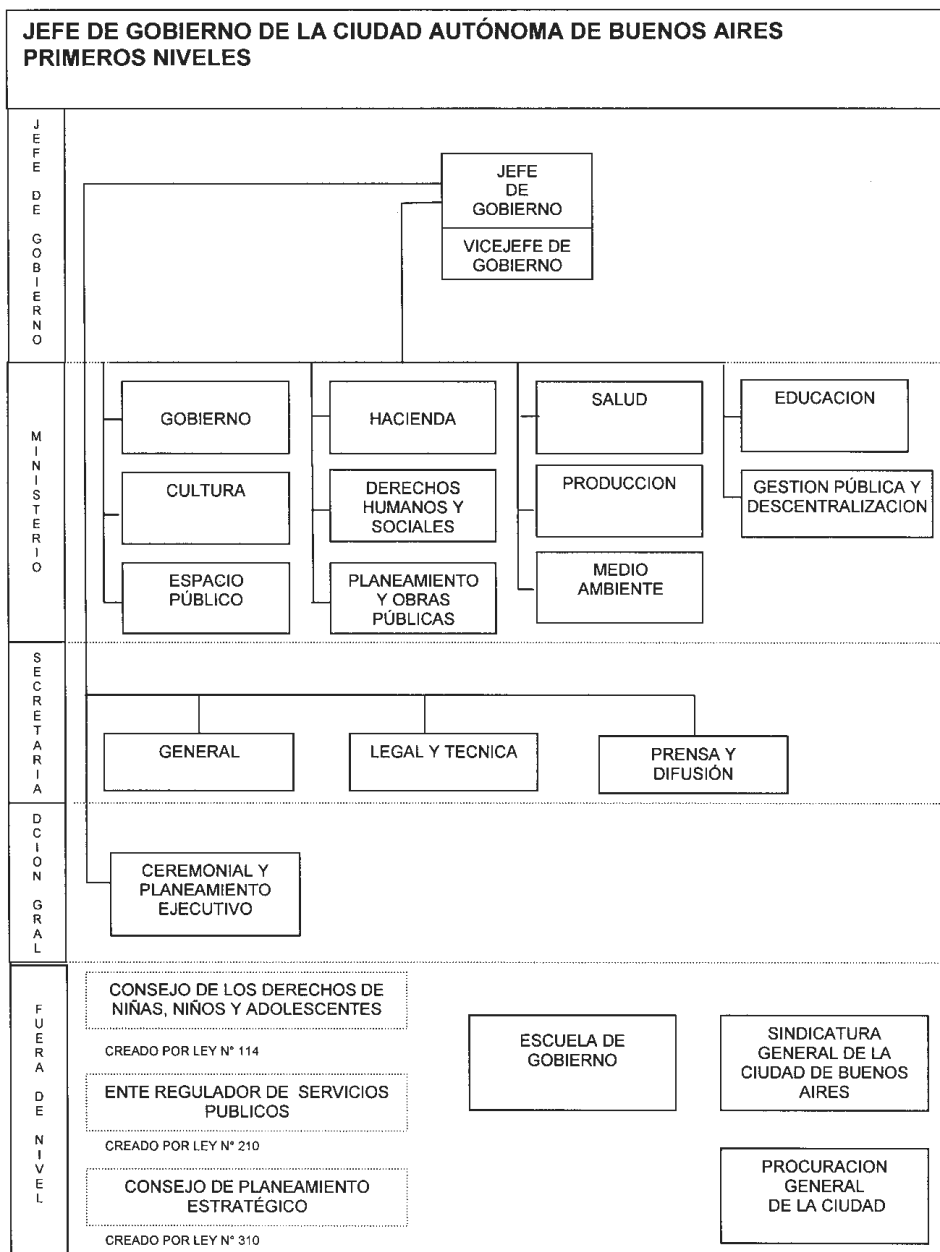
Estructura Orgánico Funcional del Gobierno de la Ciudad Autónoma de Buenos Aires

Decreto N° 350/06

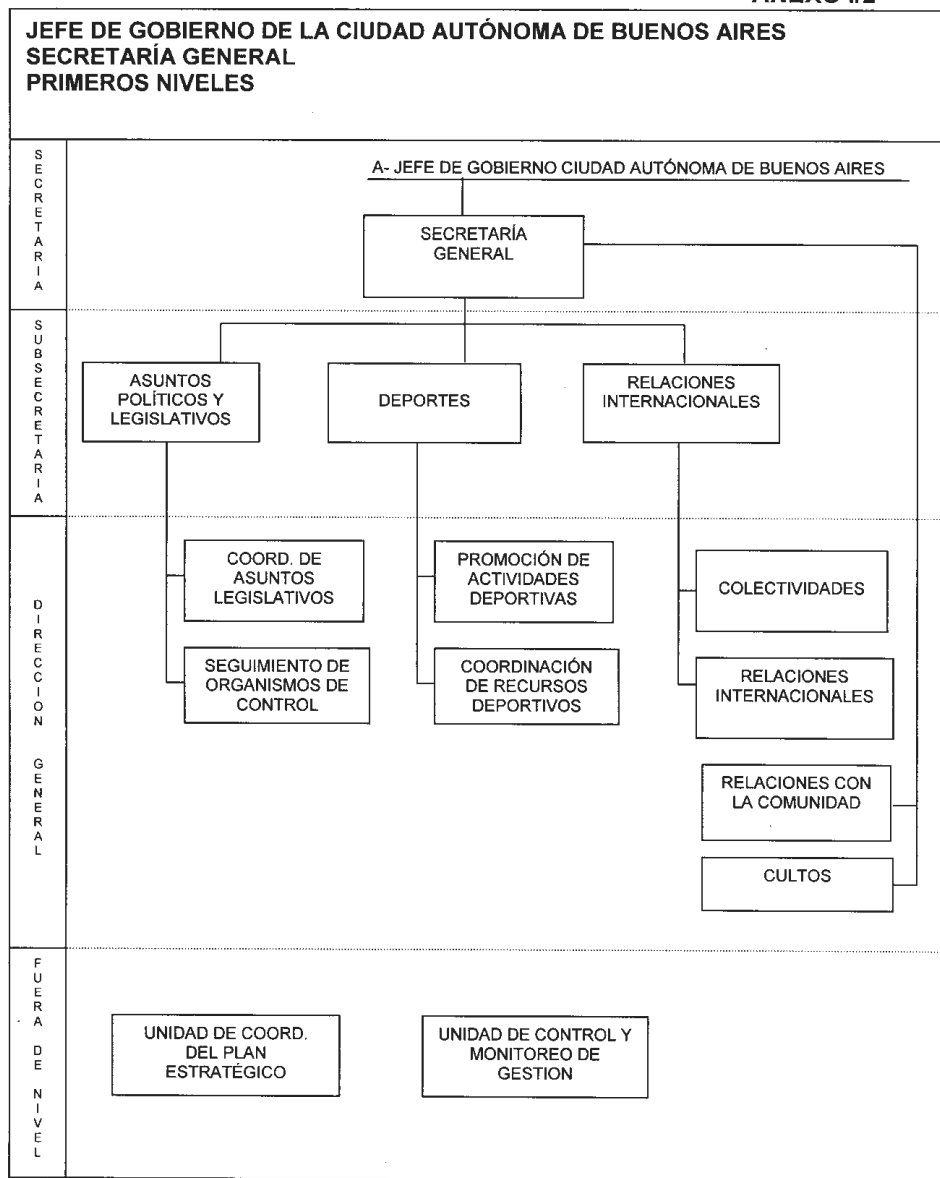
Anexos

Estructura Orgánico Funcional

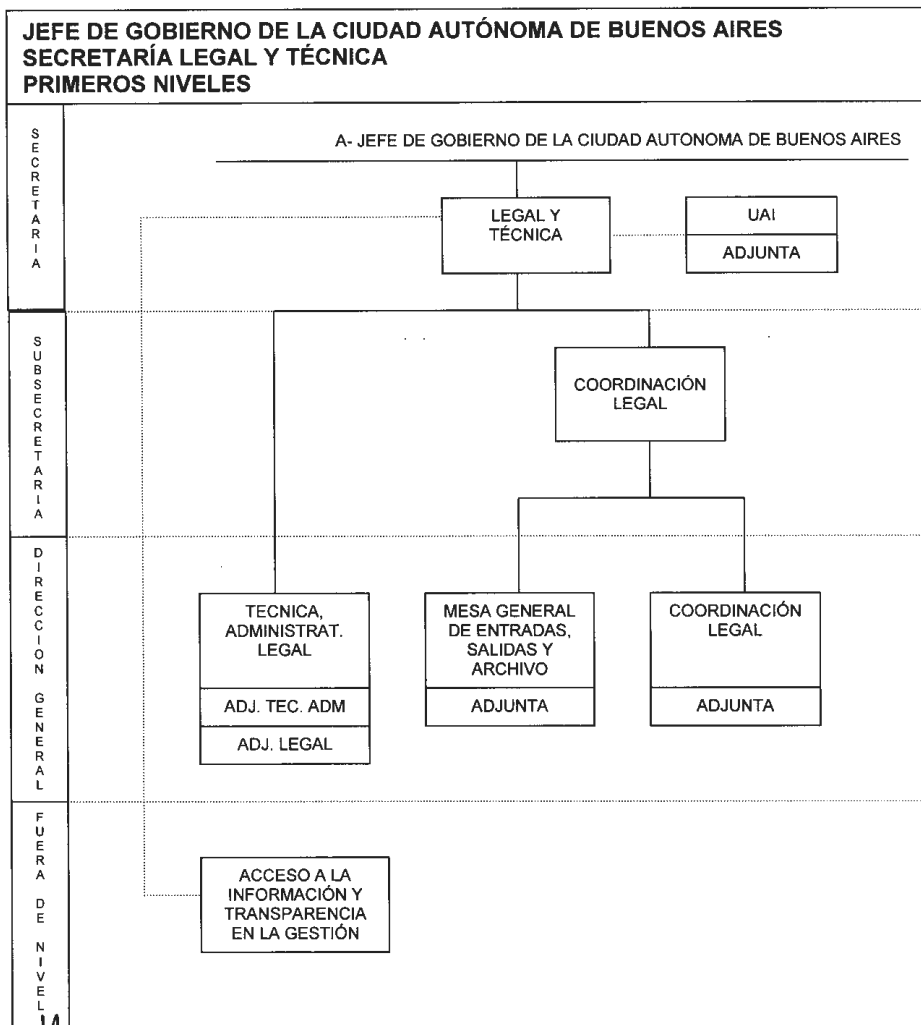
ANEXO 1/1



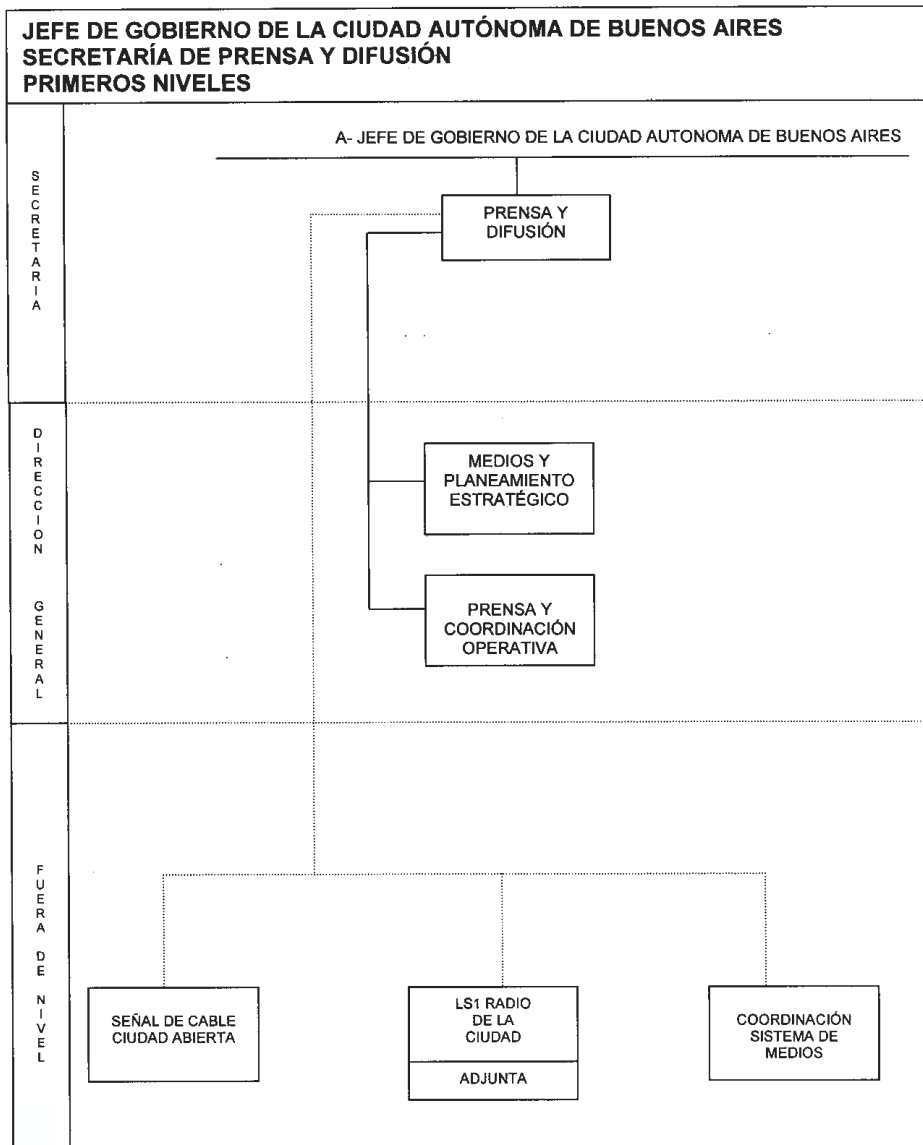
ANEXO I/2



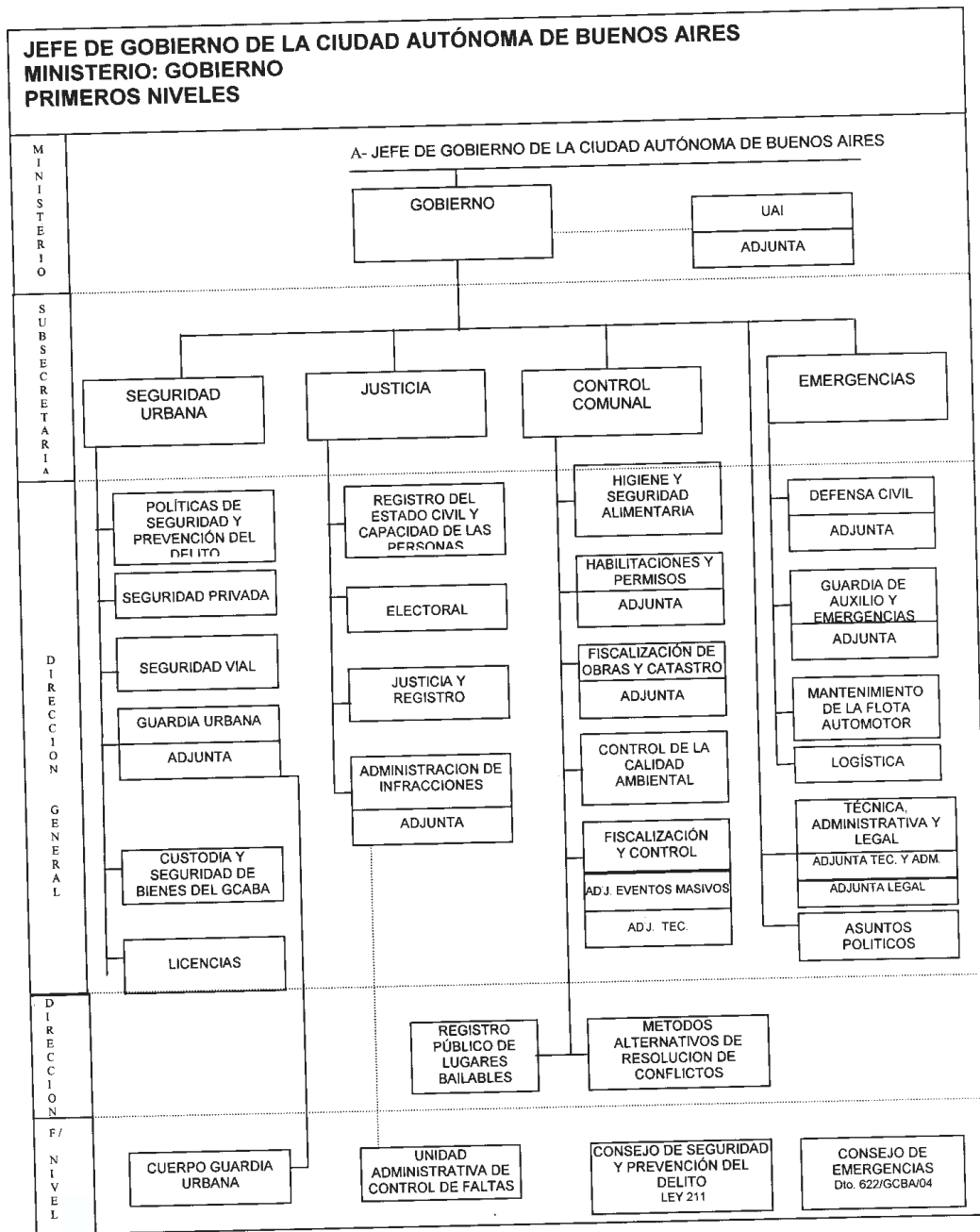
ANEXO I/3



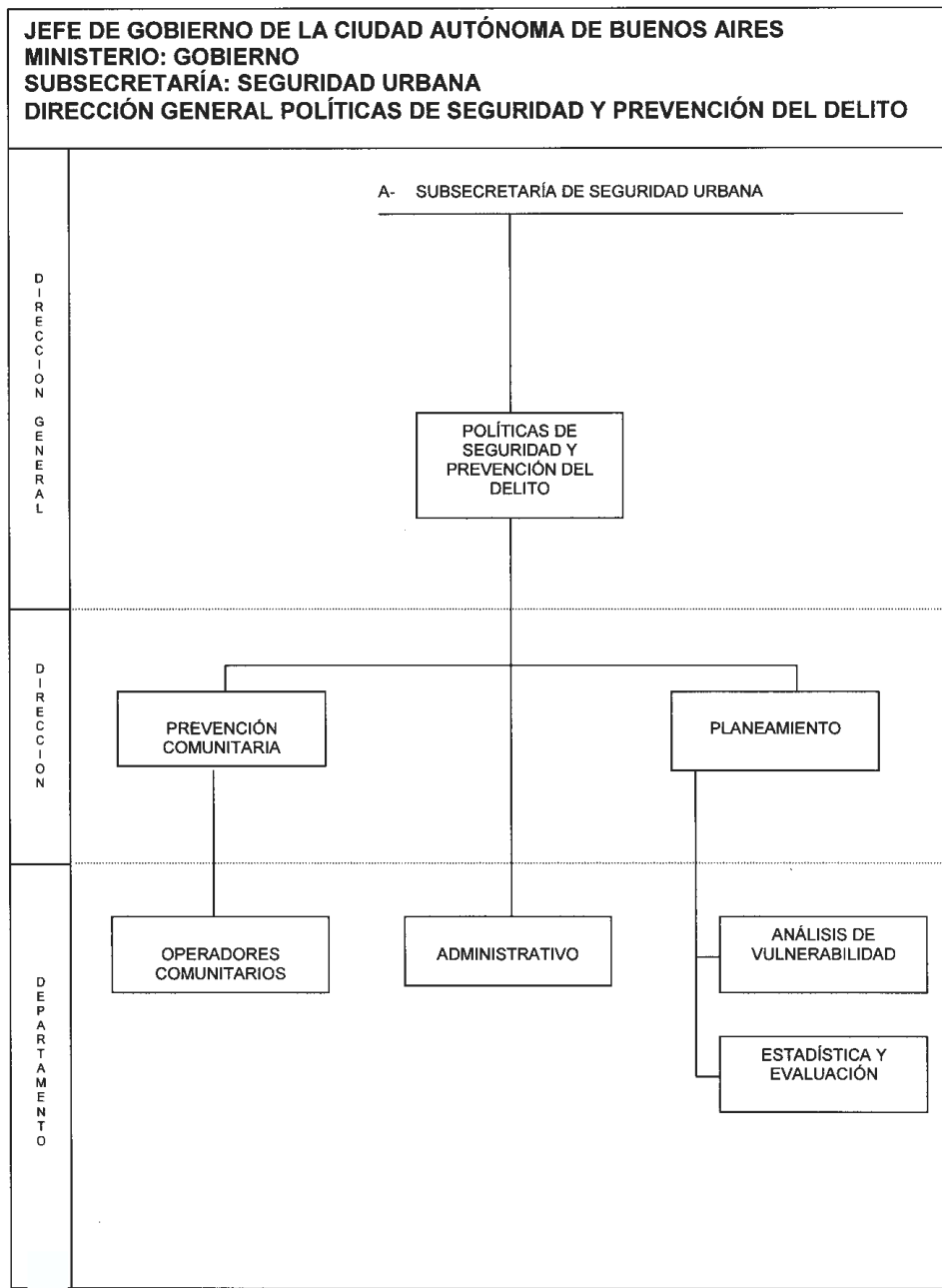
ANEXO I/4



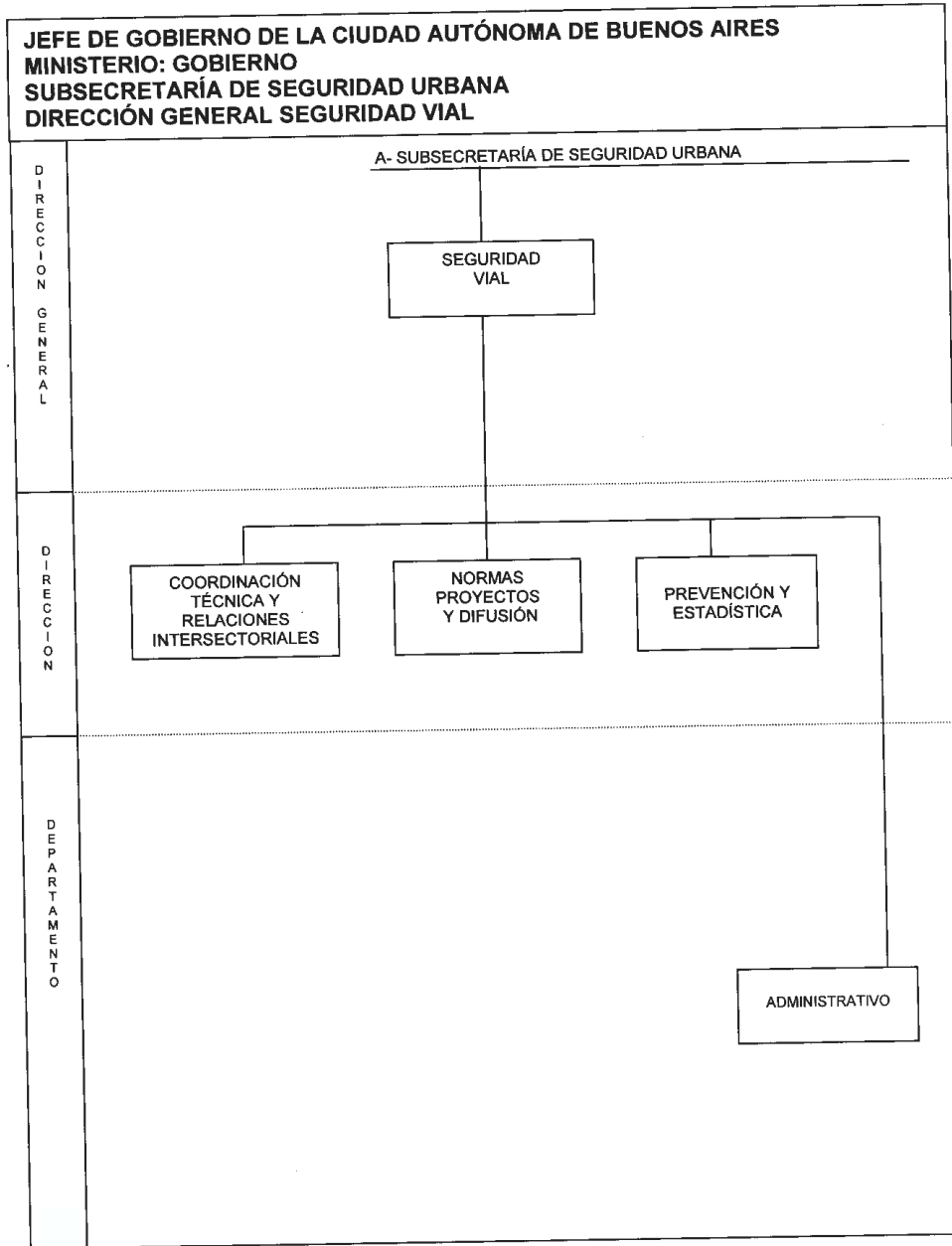
ANEXO I/5



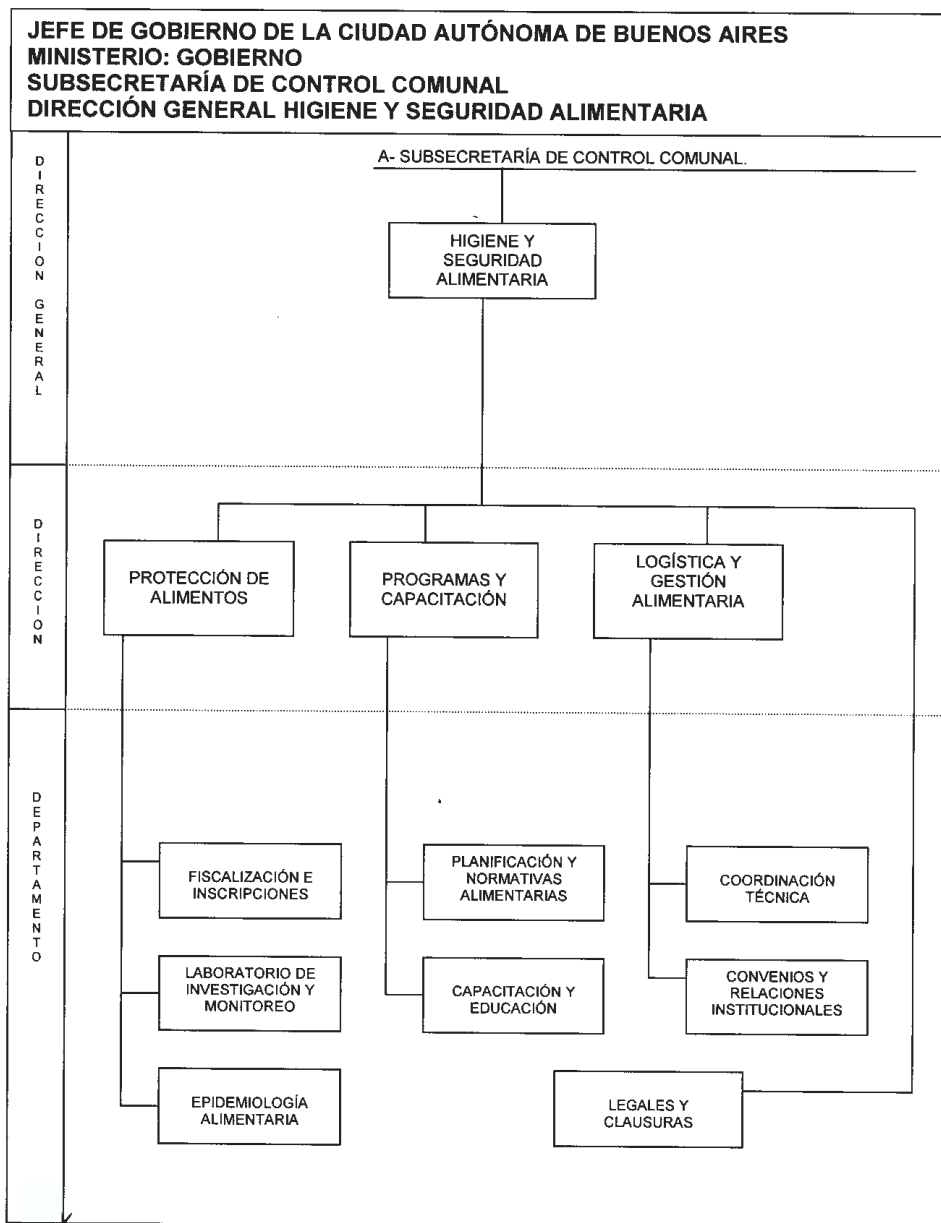
ANEXO I/5 A



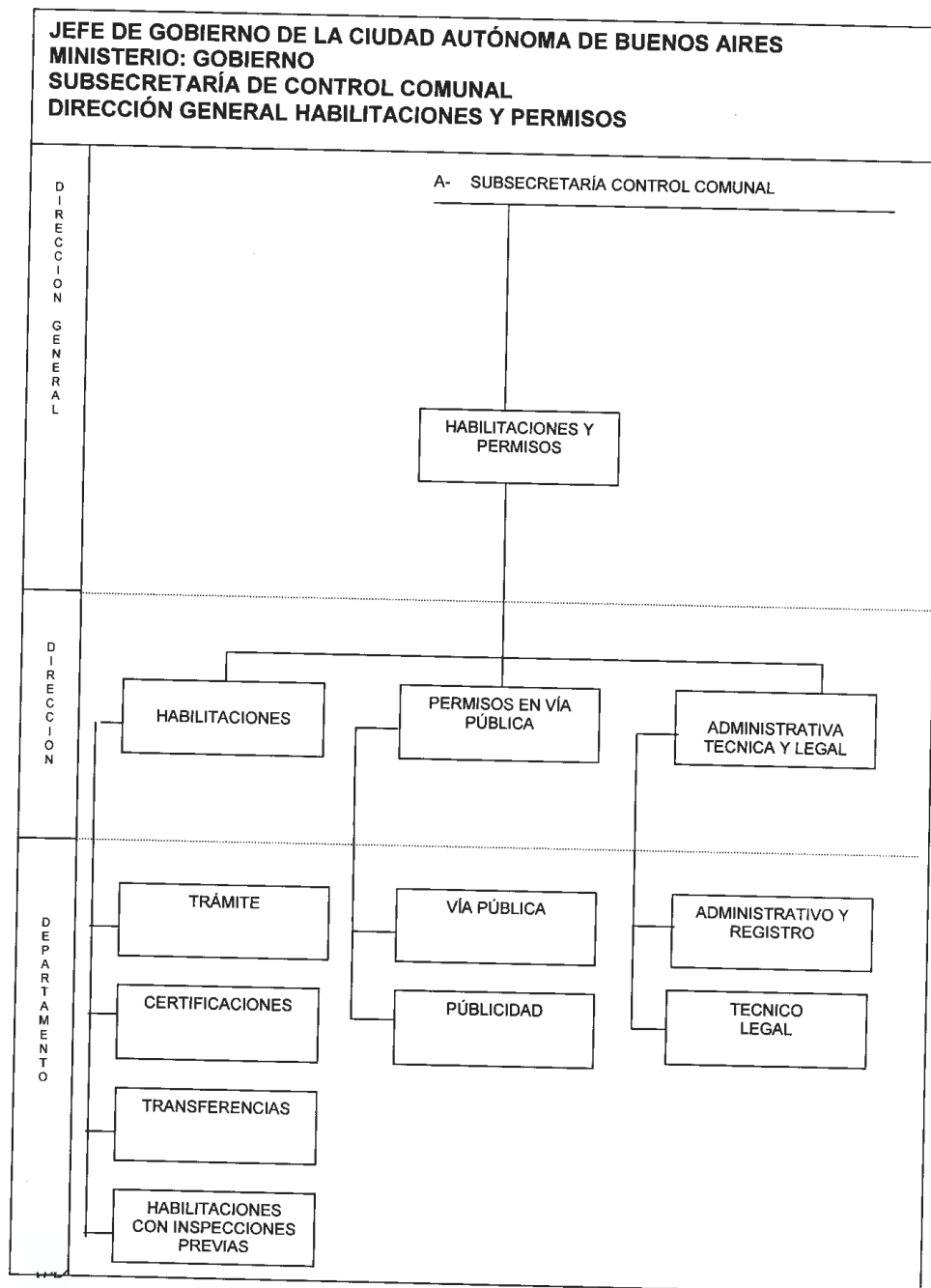
ANEXO I/5 B



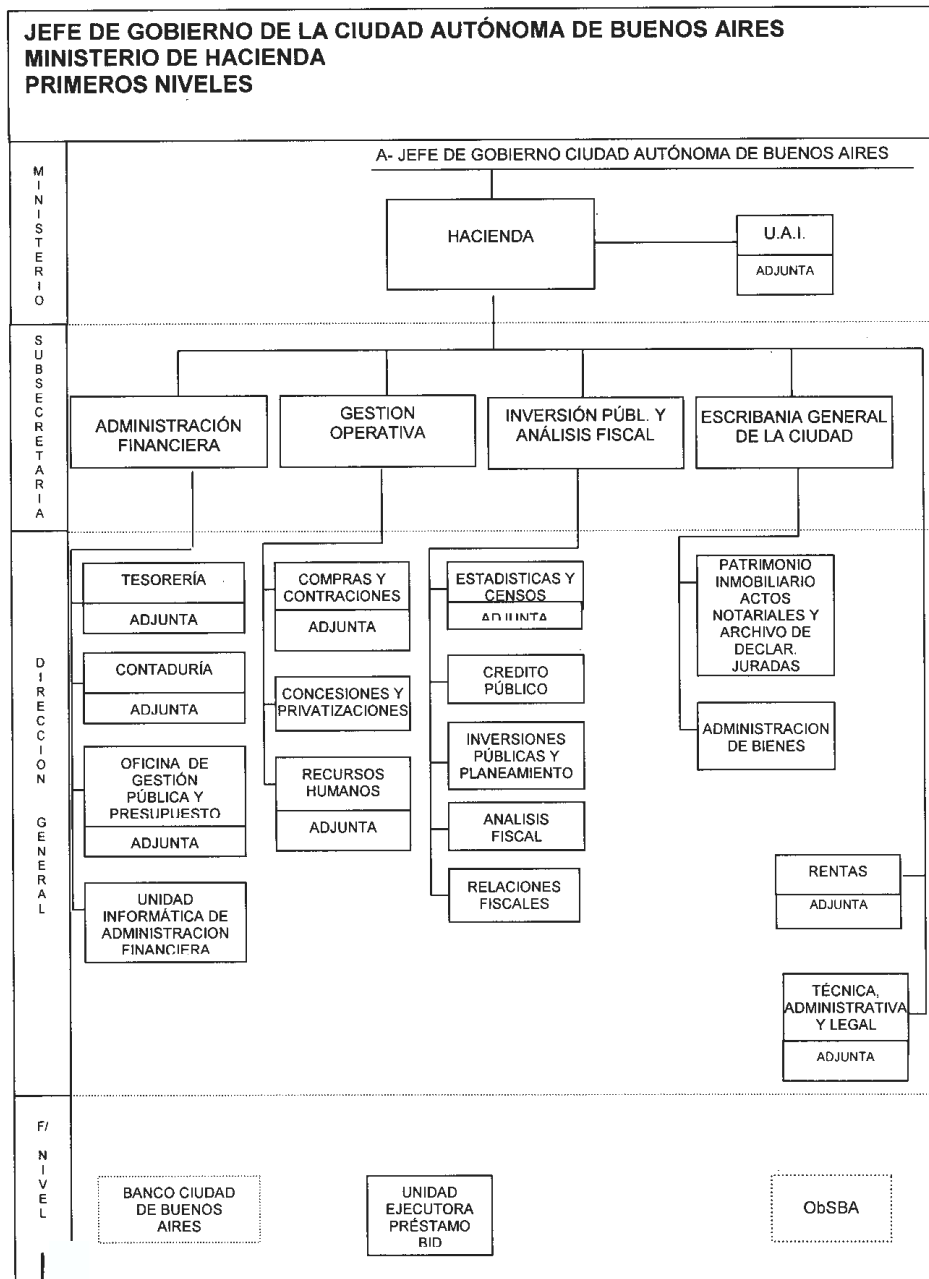
ANEXO I/5 C



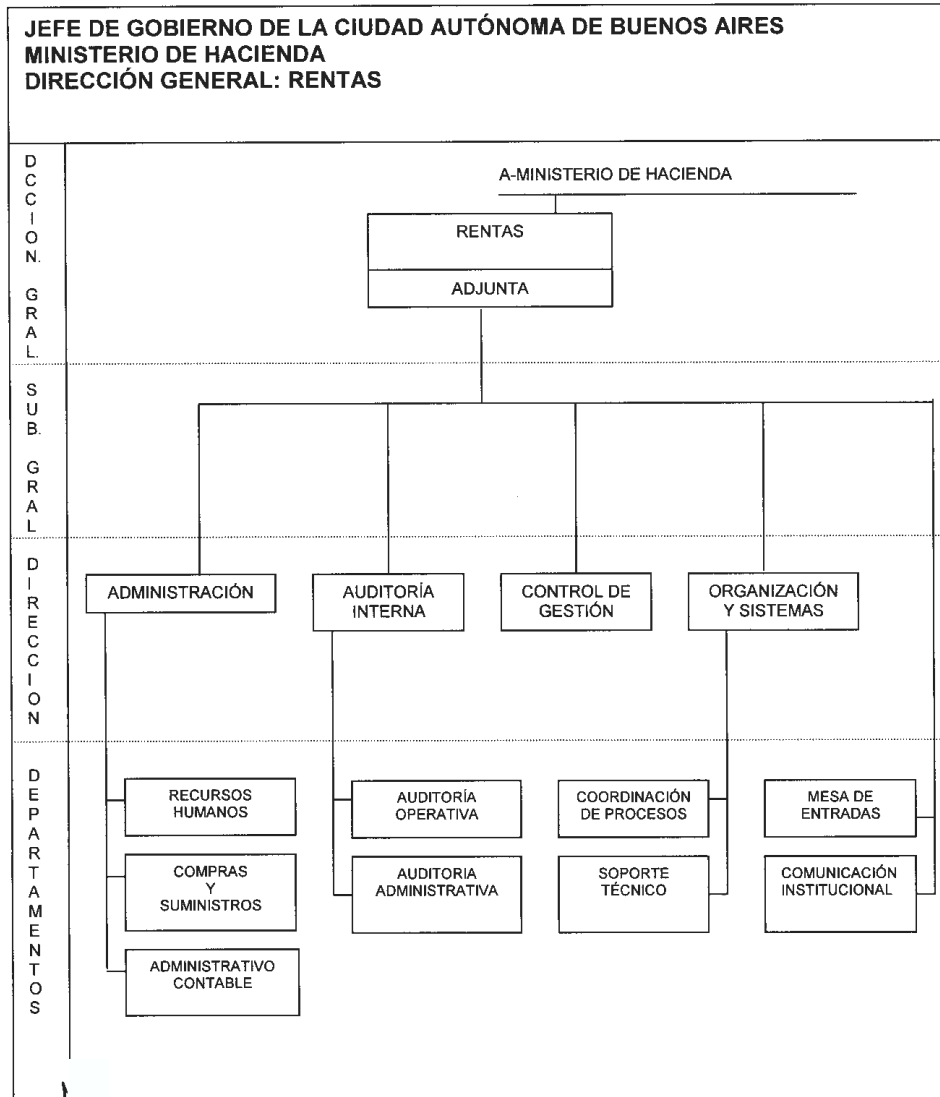
ANEXO I/5 D



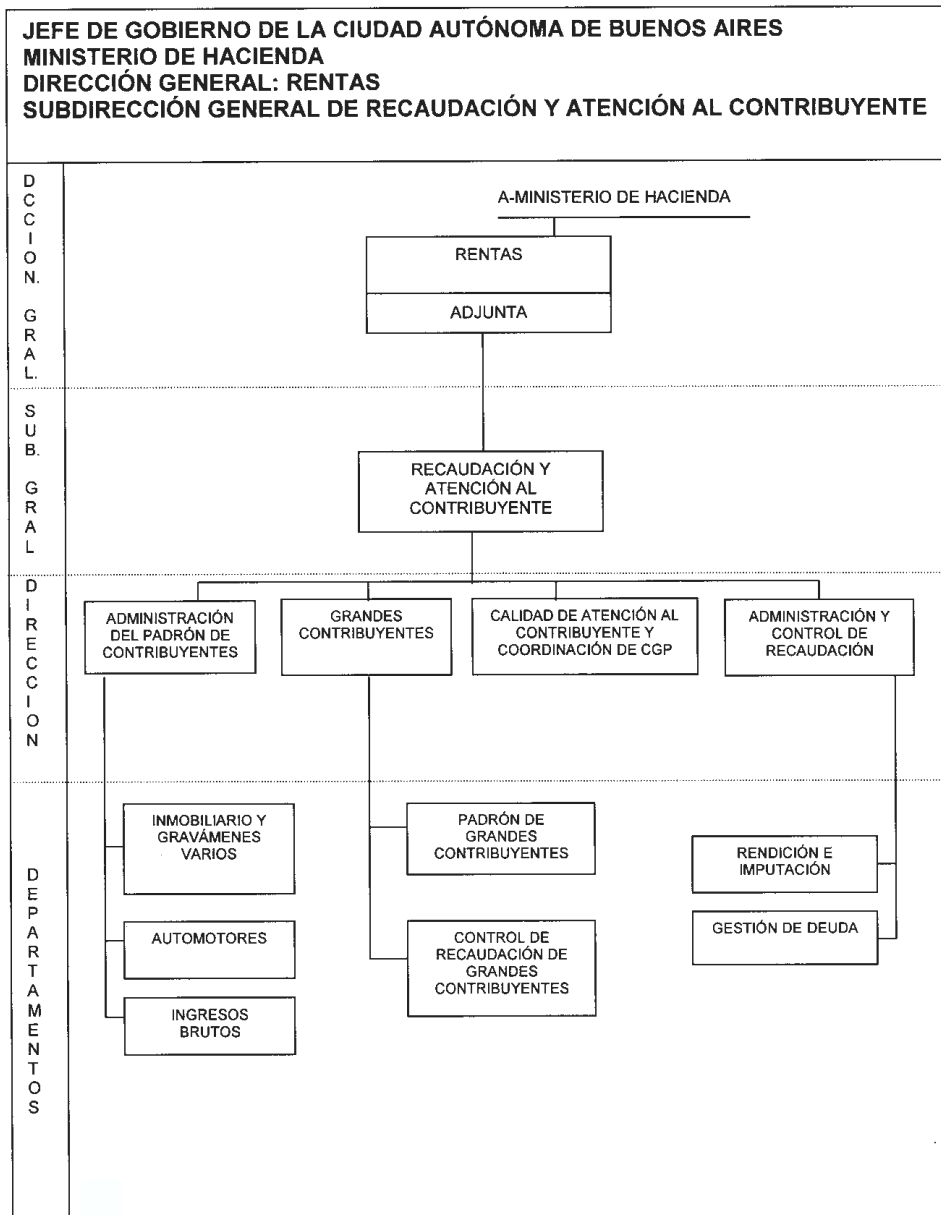
ANEXO I/6



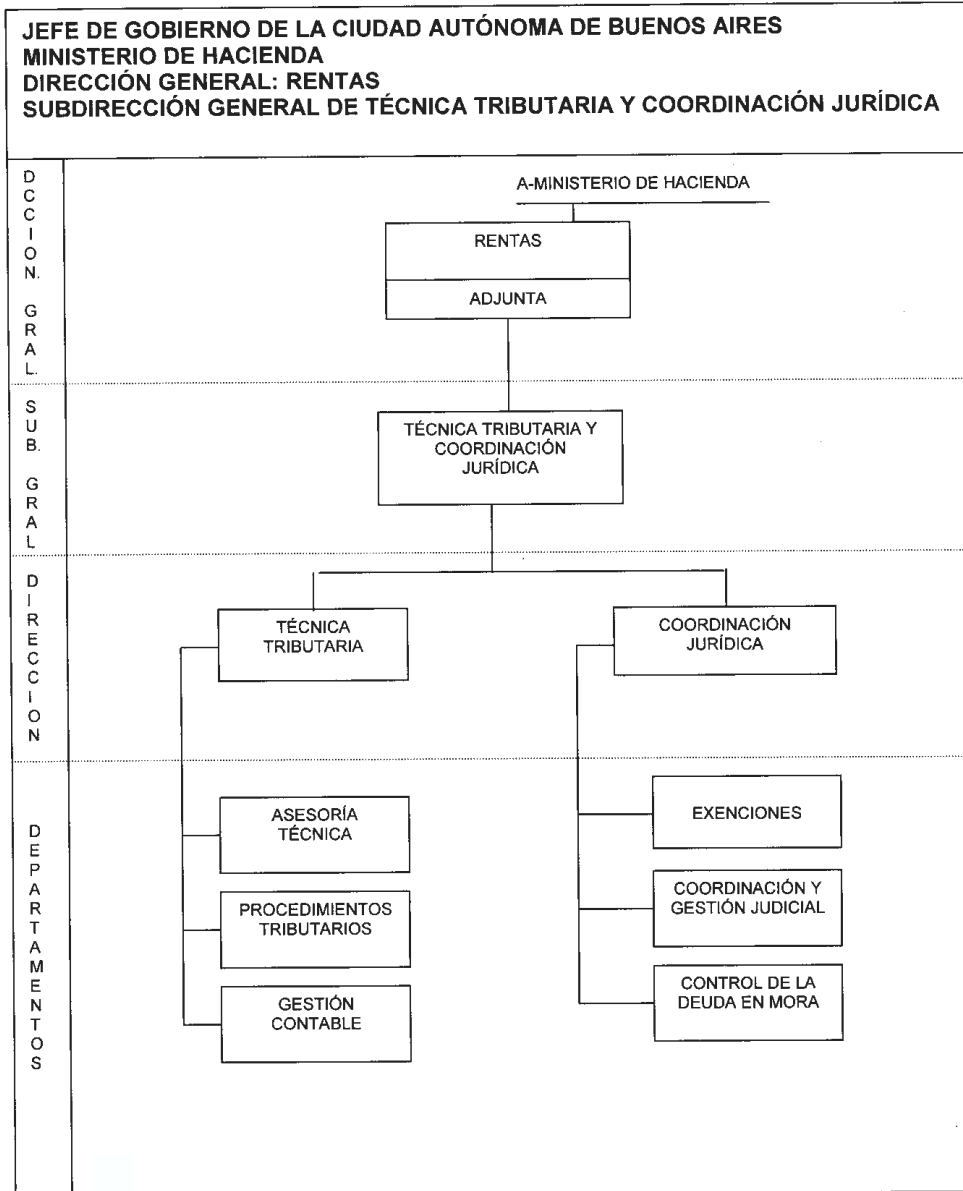
ANEXO I/6 A



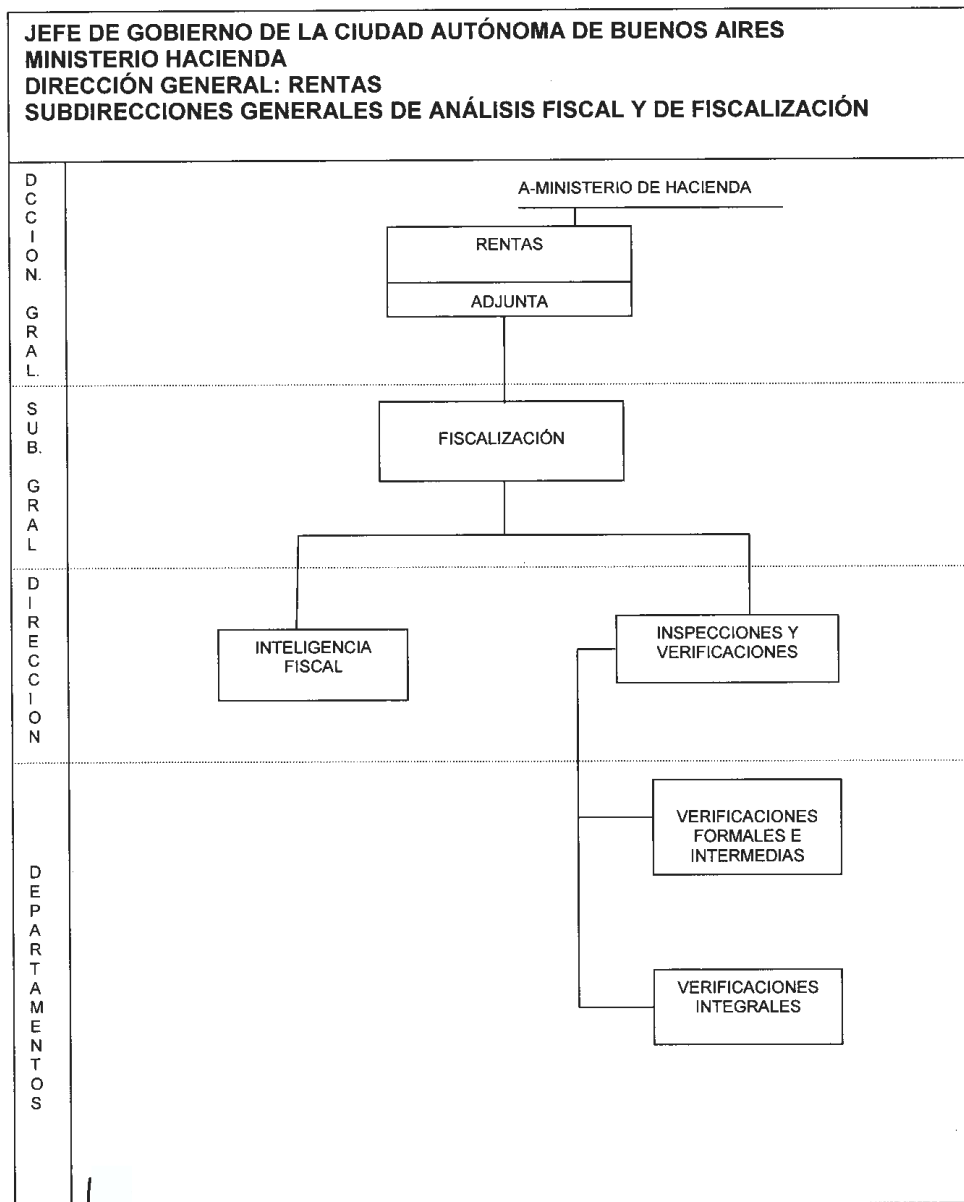
ANEXO I/6 B



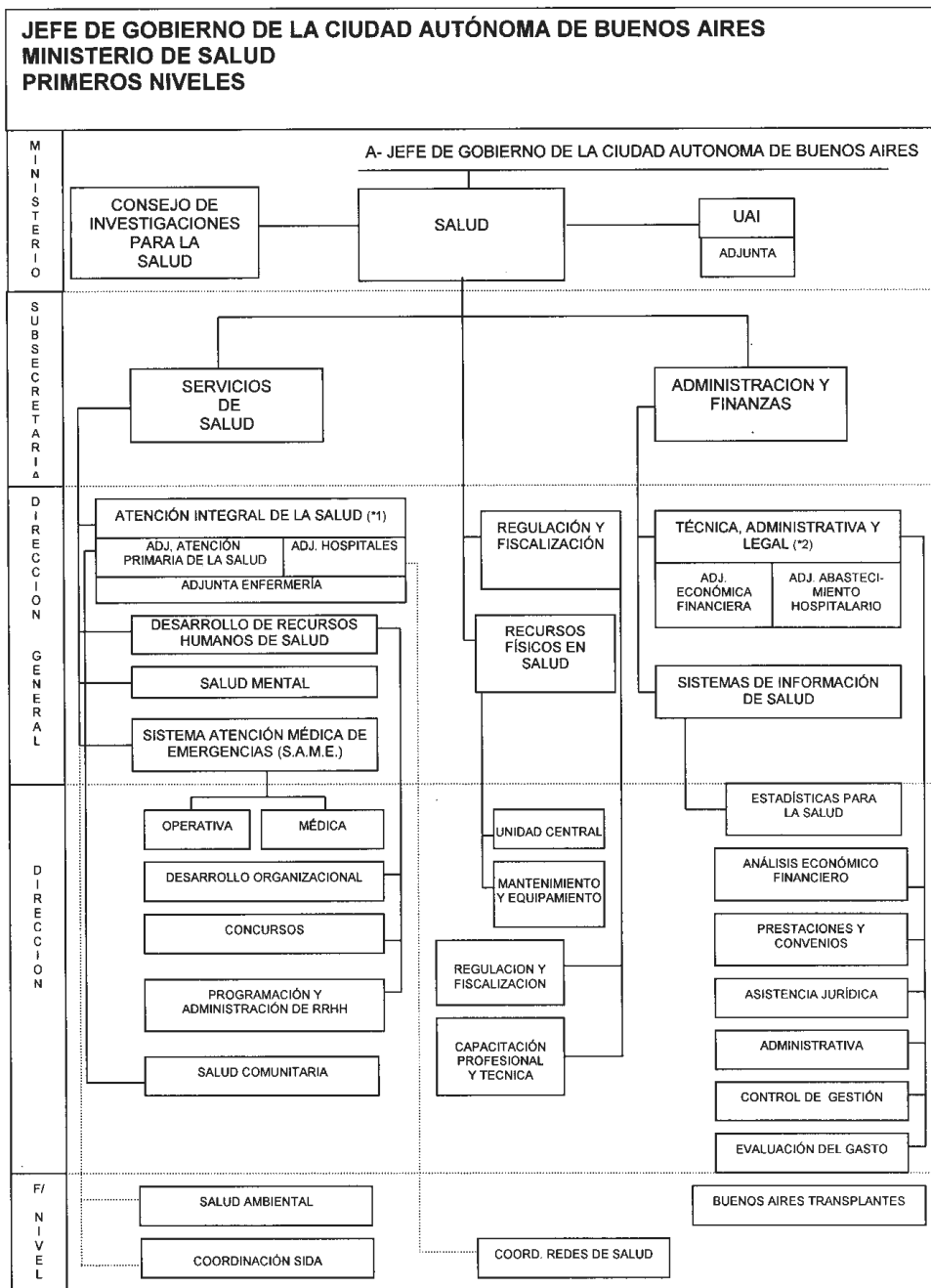
ANEXO I/6 C



ANEXO I/6 D

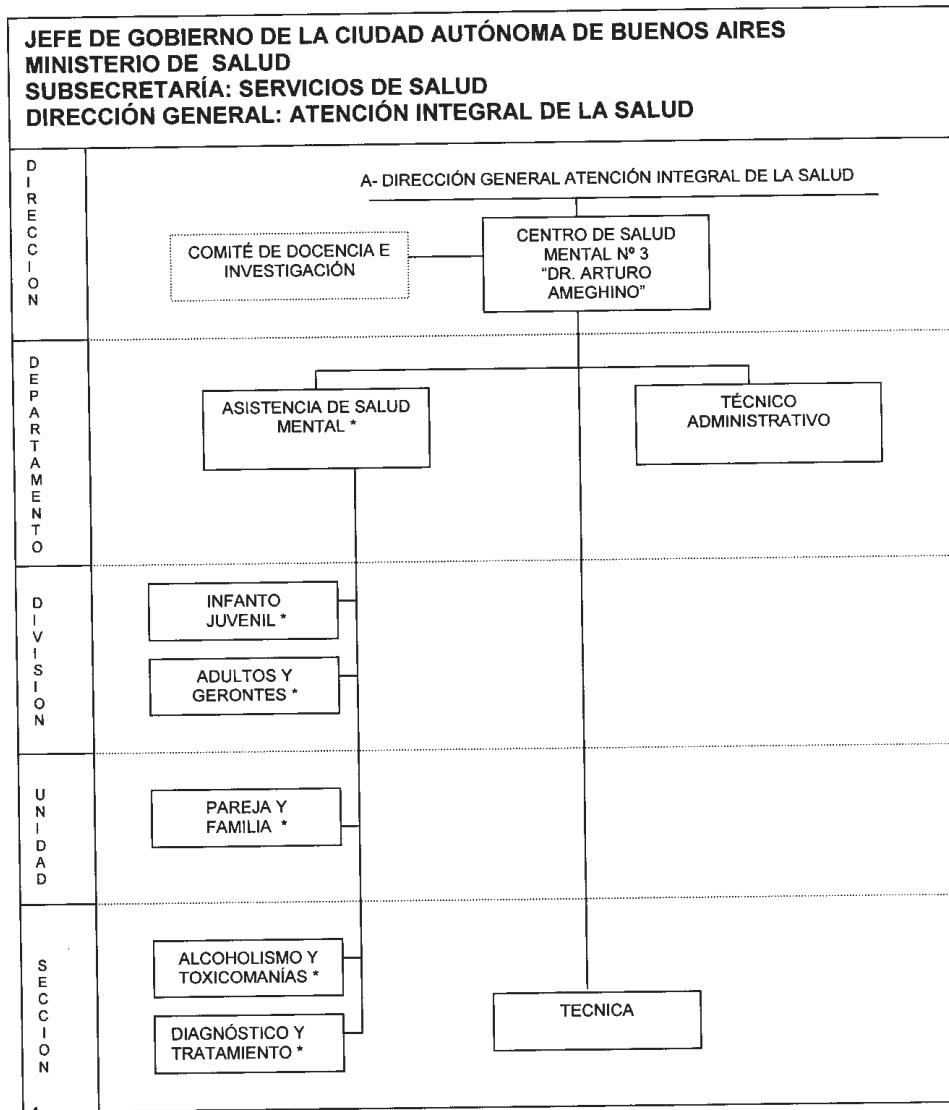


ANEXO I/7



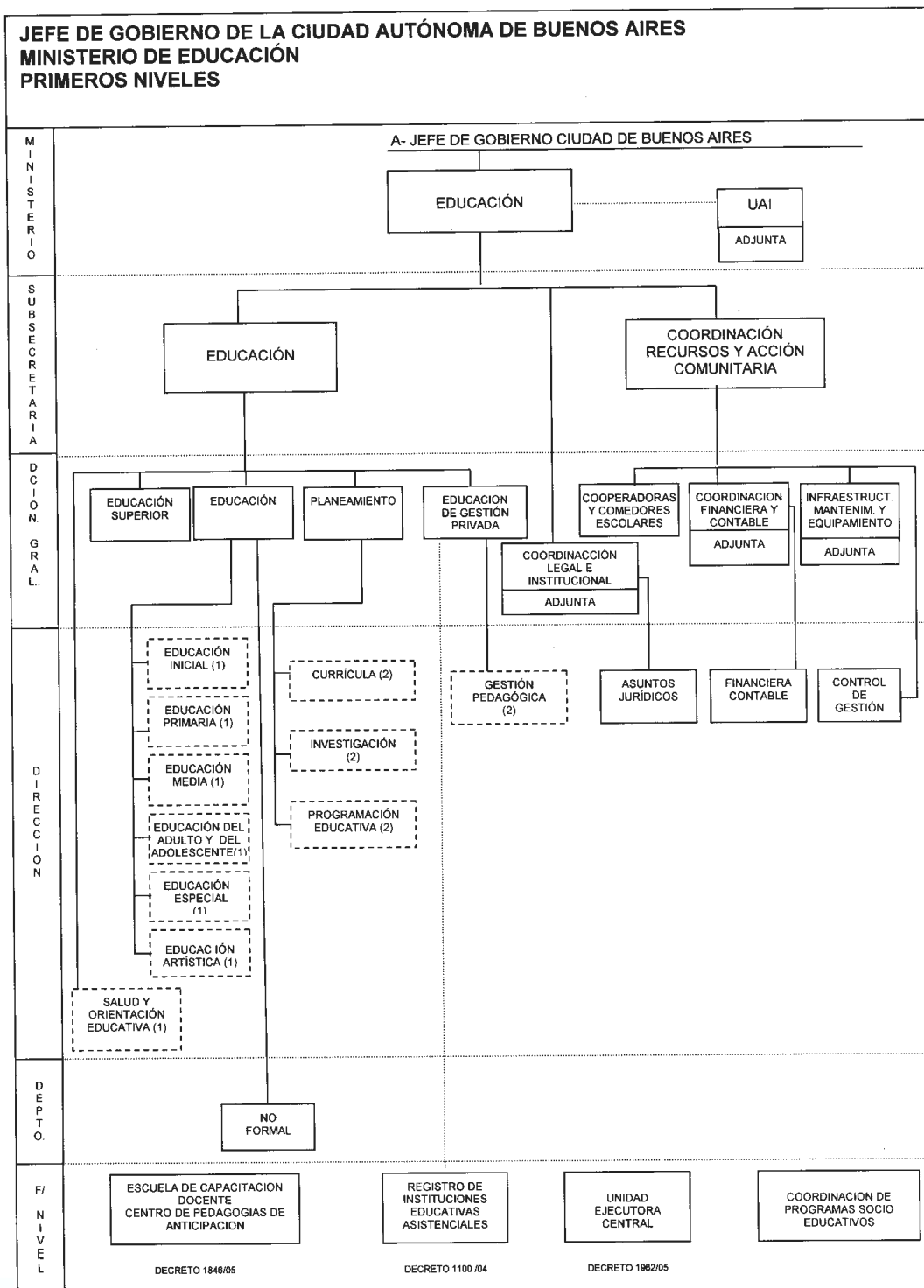
(*1) DE ESTE NIVEL DEPENDEN LOS 33 (TREINTA Y TRES) HOSPITALES
 (*2) INCLUYE 33 (TREINTA Y TRES) CARGOS CON NIVEL DIRECCIÓN GENERAL ADJUNTA (ADMINISTRADORES RECURSOS DESCONCENTRADOS)

ANEXO I/7 A



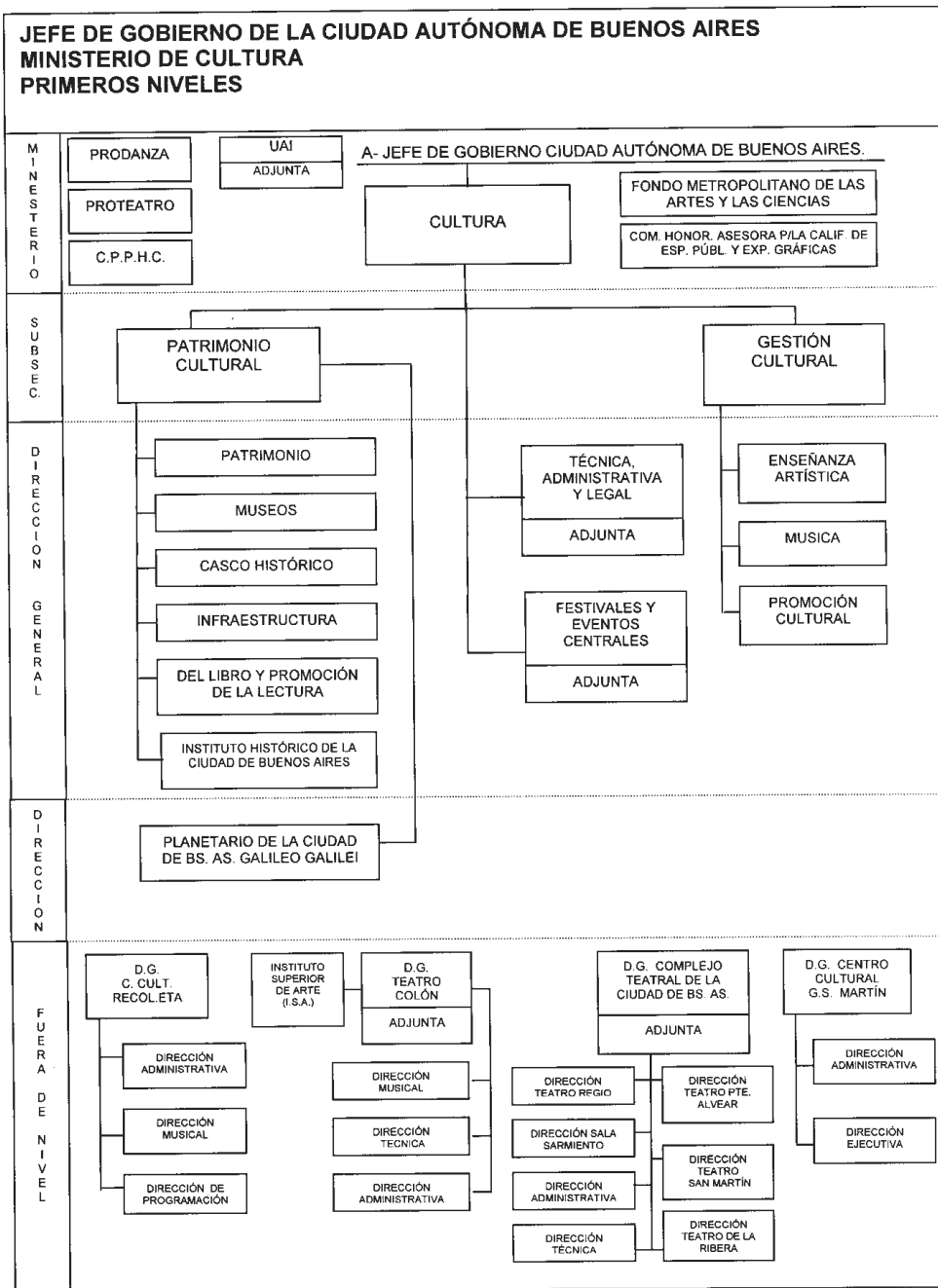
* CARRERA PROFESIONAL HOSPITALARIA

ANEXO I/8

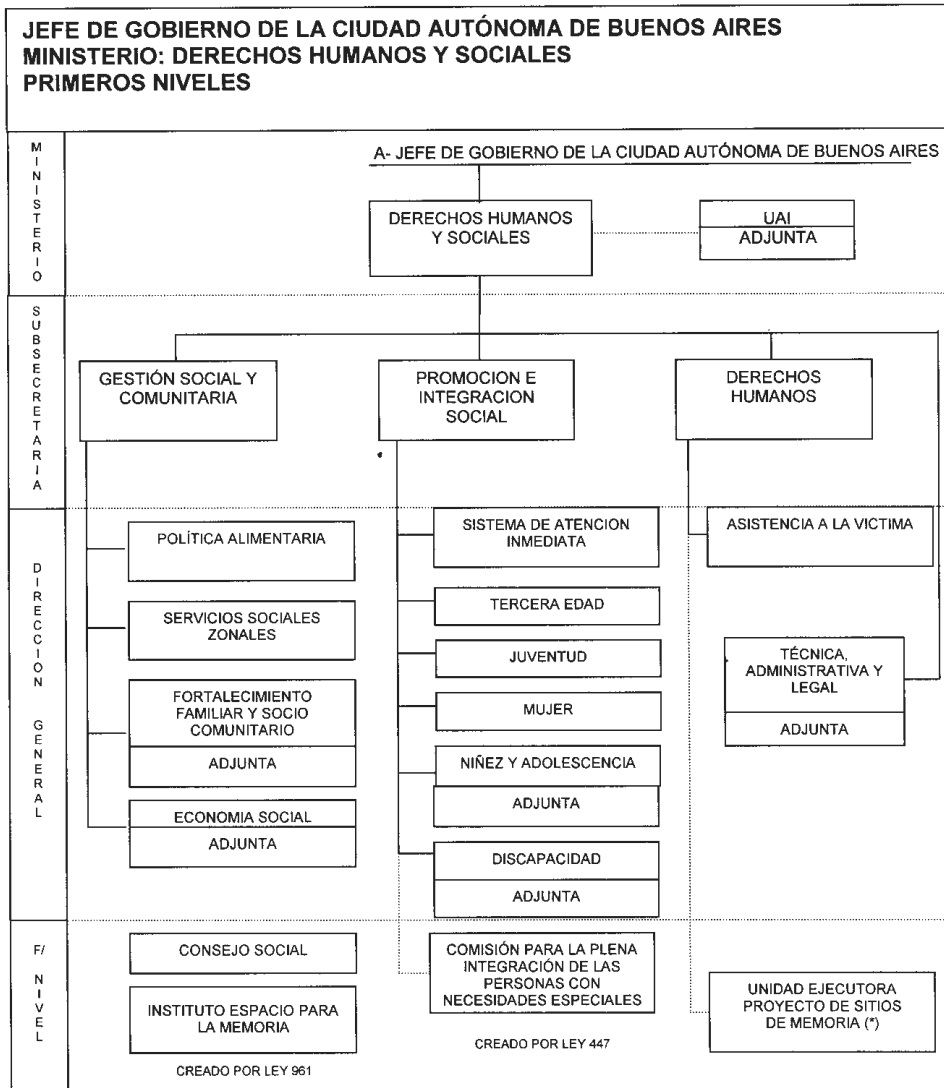


(1) CARGO DOCENTE (ESTATUTO DOCENTE) - ORDENANZA 40593 - DECRETO 1334 / 05
 (2) CARGO DOCENTE - NIVEL RETRIBUTIVO EQUIVALENTE A DIRECCION DE AREA (ESTATUTO DOCENTE) - ORDENANZA 40593 - DECRETO 1854 / 99

ANEXO I/9

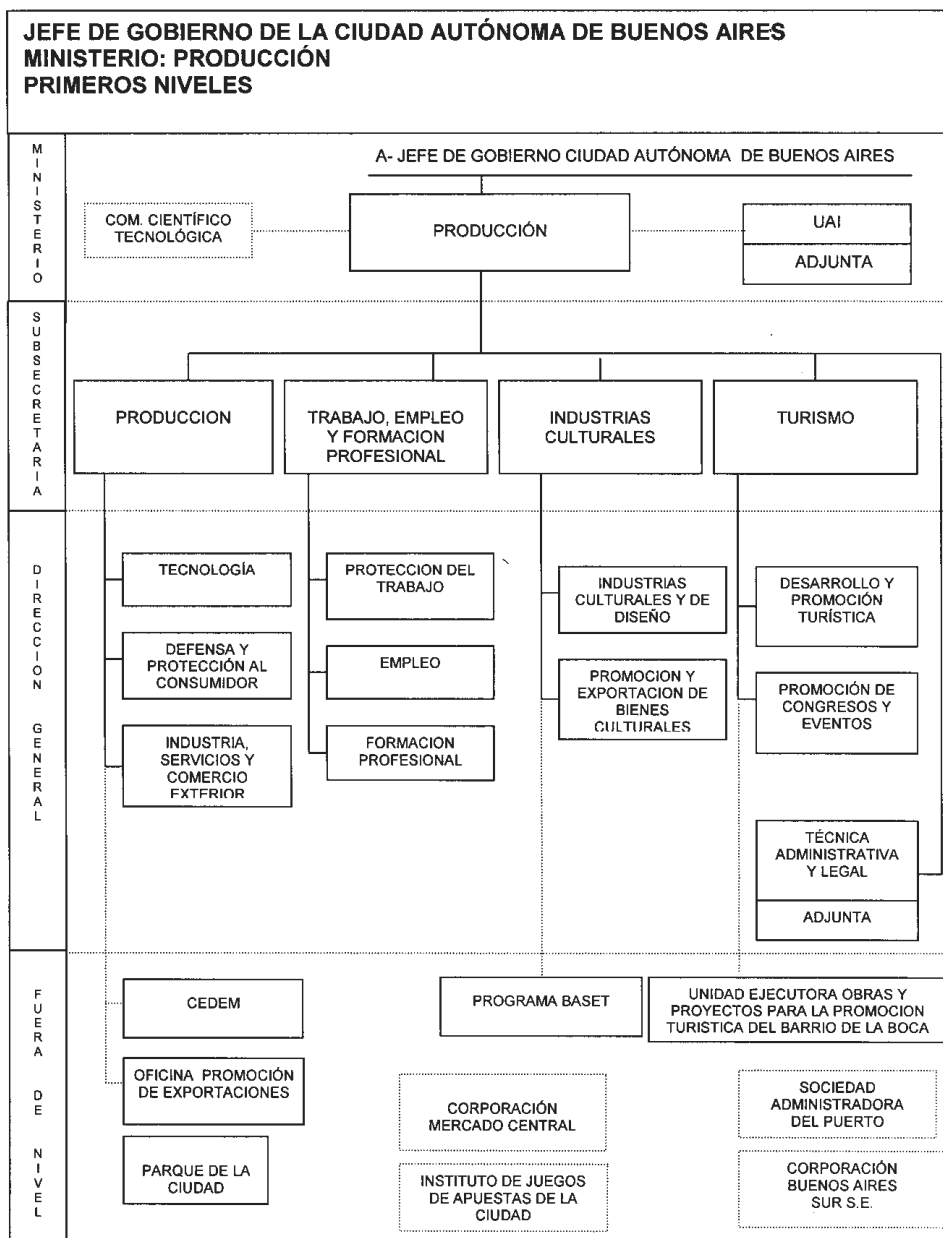


ANEXO I/10

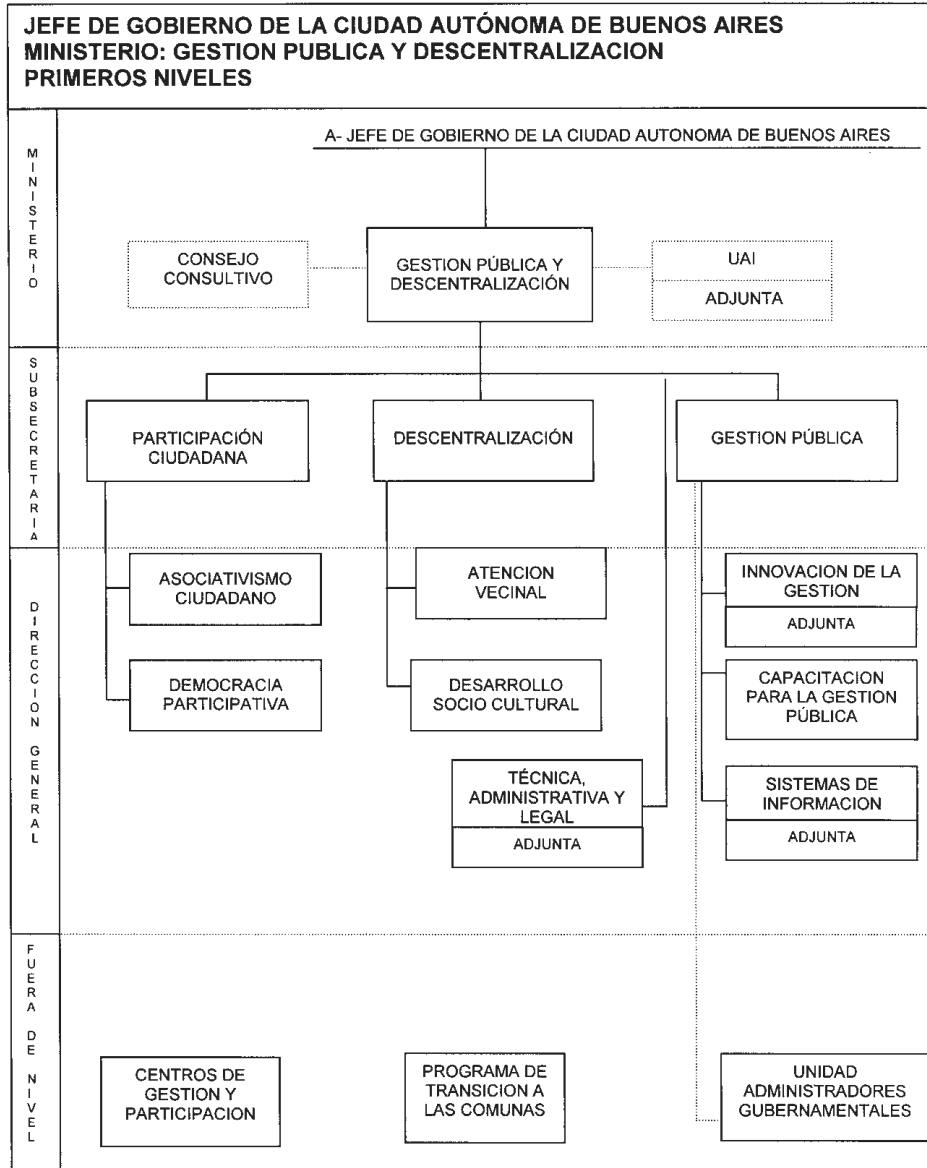


(*) Su titular contara con un nivel retributivo equivalente a Subsecretario.

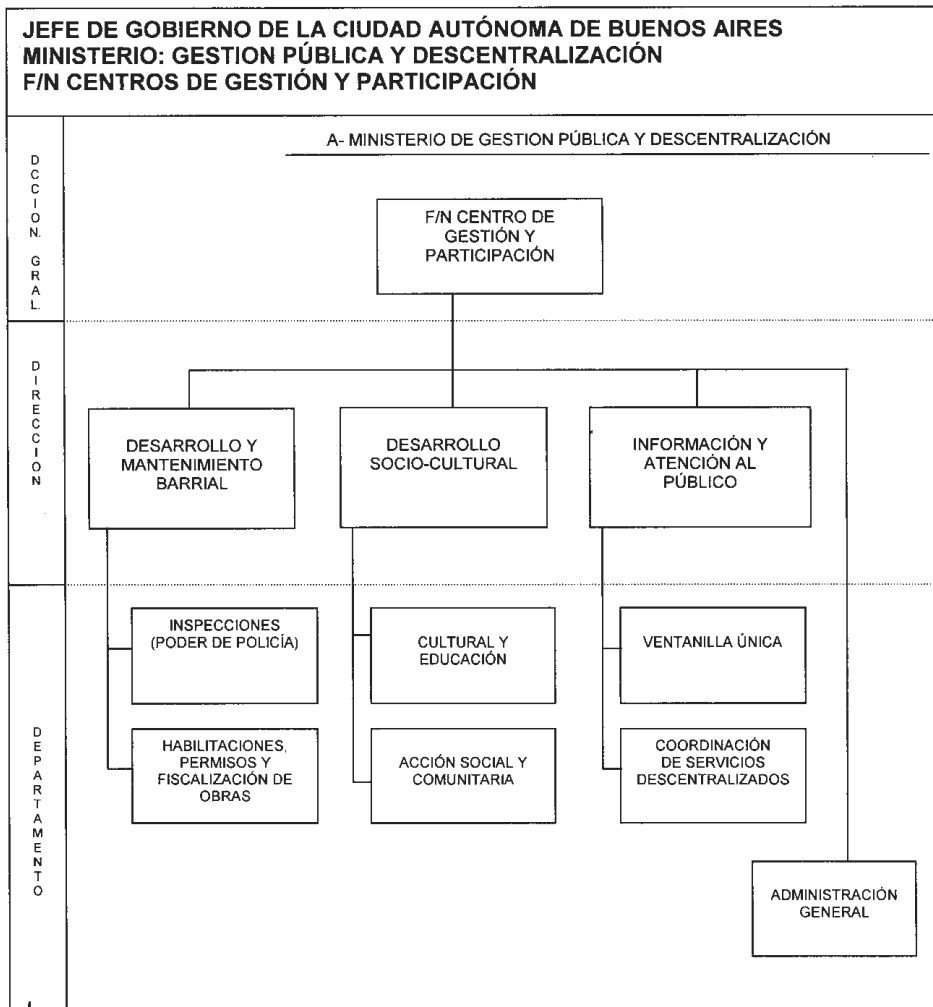
ANEXO I/11



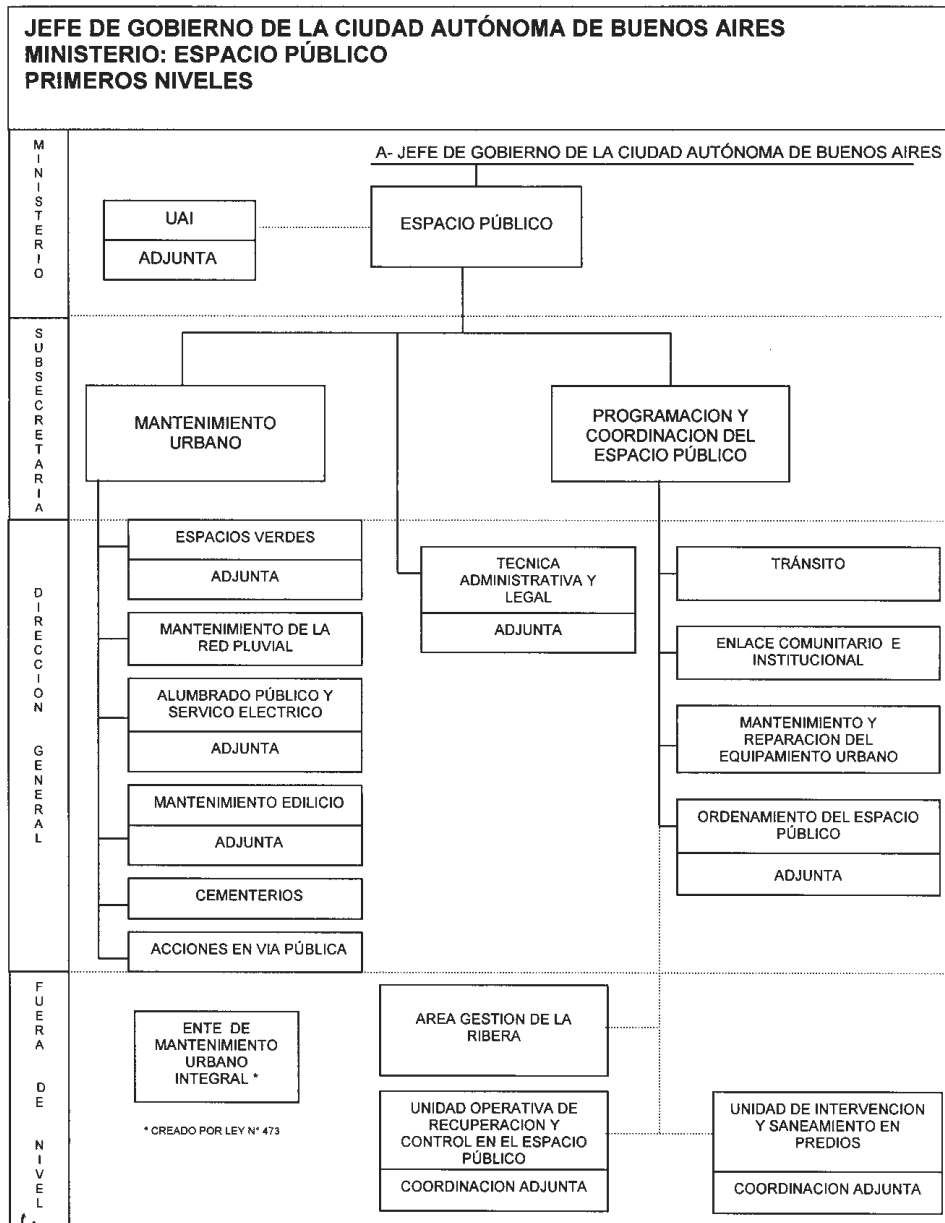
ANEXO I/12



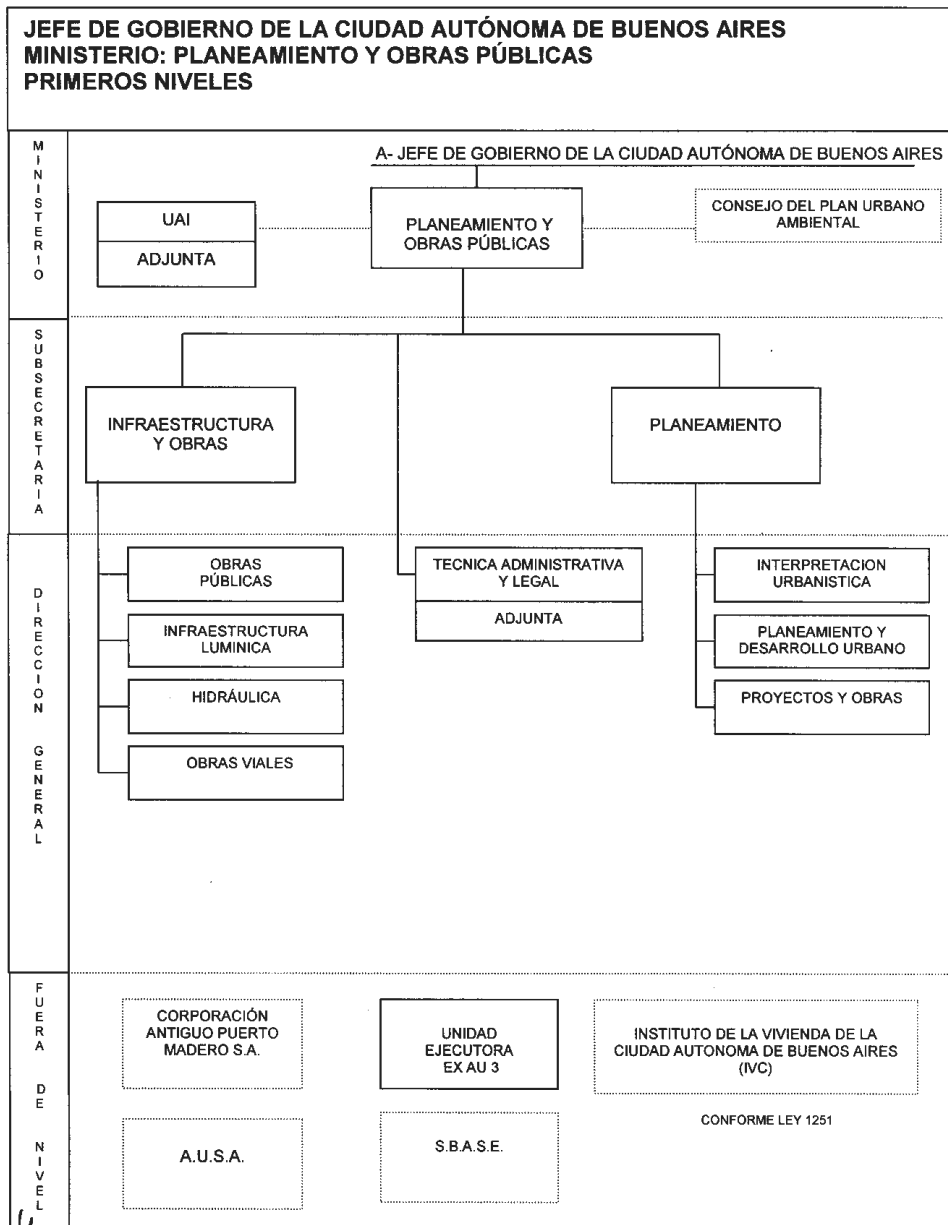
ANEXO I/12 A



ANEXO I/13



ANEXO I/14



ANEXO I/15

